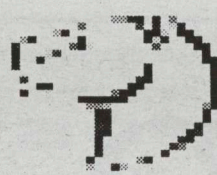




# The Pride



<http://www.csusm.edu/pride>

California State University, San Marcos

Vol VIII No. 1/ Tuesday, August, 29, 2000

## Stack Parking Arrives at CSUSM

By: Melanie Addington  
Pride Editor

Stack parking is a new, free service provided in CSUSM's Parking Lot "C." The service-- which began the first day of classes, August 24, 2000--will end September 22, 2000. Stack parking is provided through Central Parking which is under contract with the University.

Lot attendants will direct drivers to parallel park in the aisles once the lot is full. As with a valet service, drivers will leave their keys with the attendants and receive claim tickets in exchange.

Any driver that wishes to move his or her vehicle from a marked space must tell the attendant so the attendant can move the car(s) blocking them in. Once a space has opened up, the attendants will fill the space with a vehicle from stack parking.

Stack parking begins at 9:00 AM. 2:00 PM is the cutoff for the stack parking option, and all keys must be picked up by 5:00 PM.

According to the Parking Services flyer, the University decided to attempt stack parking in an effort to relieve "perennial start-of-semester demand for parking spaces."

Stack parking has never been attempted before at Cal State San Marcos.



Car Fire Taints Oaxacan Festival Story on Page 7  
Photo by: Chris Weedon

## Guelaguetza Festival



Young participant in the Guelaguetza Oaxaqueña San Marcos 2000 Event  
Photos provided by: Chris Weedon

By: Giovanni Ferrer  
Pride Staff Writer

The "Guelaguetza Oaxaqueña San Marcos 2000" festival came to the CSUSM campus on Sunday, August 27, from 10:00am-5:00pm.



Women in traditional wedding dresses.

Approximately 2,000 people attended the event held by The Coalition of Oaxacan Indigenous Communities (COCIO).

The event, modeled after the Guelaguetza Festival from Oaxaca, Mexico, had been held at Mira Costa Community College for the past six years.

The Guelaguetza Festival was brought to CSUSM with the support of President Gonzalez, COCIO, CSUSM-MECHA, CSUSM Center for Border Studies (CBRA), and CSUSM Latino Association of Faculty & Staff (LAFS).

Eloy, a resident of San

Marcos, said that "the event brings the North County Oaxacan community together" to join in celebration of their rich customs.

The Guelaguetza Festival is a combined cultural celebration of the diverse indigenous groups of the state of Oaxaca, Mexico. The festival features performances of traditional songs, dances, and music by each cultural group.

>>Article continued on pg. 7



Traditional Oaxacan cuisine attracts hungry spectators at the event.

## Convocation Kicks Off the 2000-01 School Year

By: Melanie Addington  
PRIDE EDITOR

President Gonzalez welcomed over 450 staff and faculty members to the new school year at convocation on August 21. President Gonzalez reflected on last year's accomplishments and dilemmas and urged faculty and staff to pull together to build a harmonious campus community in the upcoming school year.

### Hiring

Over the summer, college administrators filled two vice

presidential positions: Dr. Barbara Bashein is the new Vice President for External Affairs, and Mr. Stephen Garcia will be the new Vice President for Finance and Administrative Services. Suzanne Green is serving as interim Vice President until Mr. Garcia joins the CSUSM staff in October.

Last spring, CSUSM hired Dr. Mohamed Moustafa as the new Dean of the College of Business Administration, and Mr. Jonathon Poullard as Dean of Students.

>> Article continued on pg. 4

## Dr. Moustafa Joins CSUSM as Dean of College of Business Administration

By: Victoria B. Segall  
Pride Editor

Dr. Mohamed Moustafa, Dean of the College of Business Administration, is one of the new faces to join the CSUSM faculty this year.

Dr. Moustafa, who joined the campus July 1, was born and raised in Egypt where he received his Bachelor's degree at Cairo University. He went on to receive his Master's degree and his Ph.D. in accounting through the University of Illinois, Champaign-Urbana.

While attending graduate school in Illinois, Dr. Moustafa tells of how his professor, Dr. Earl Planty, influenced him to visit California because of its many business opportunities. The cold weather in Illinois only made Dr. Moustafa more than happy to move to sunny California.

In addition to serving as Dean of Business at CSU Long Beach from 1981-88, Dr. Moustafa also served as President of the United Arab Emirates University in 1990. Dr. Moustafa also has extensive experience with international and national organizations such as the International Labor Organization, the Organization for Economic Cooperation and Development, the United National Industrial Development Organization, and the World Bank.

When asked if he had ever faced conflicts working with the World Bank, Dr. Moustafa said that the five years he spent in Russia with the World Bank proved to be a tough task. While affiliated with the World Bank in Russia, Dr. Moustafa was involved in the restructuring of the accounting profession from communist-socialism to free enterprise.

Dr. Moustafa's impressive background in international affairs has proved to be useful within his field of business. President Alexander Gonzalez said of Dr. Moustafa that "He brings to the position [Dean of Business] a superb and unique combination of success in educational management and knowledge of international business issues."

When asked what brought him to CSUSM, Dr. Moustafa gave three important reasons: The first was the quality of the faculty--which he describes as "student-committed and active in research and community activities"--characteristics of faculty that are extraordinary for academic institutions. Dr. Moustafa also mentioned "innovative academic programs" and the fact that CSUSM is a "young institution."

A few of Dr. Moustafa's plans for the College of Business include:

>>Article Continued on pg. 2

In This Issue

Over the Summer  
Page 2

Web Site Review & Retraction  
Page 3

"Love and Sex"  
Page 4

Arts and entertainment  
Page 5



Opinion  
Page 6

Campus Beat  
Page 7

Calendar  
Page 10

Classifieds  
Page 11



# Over The Summer

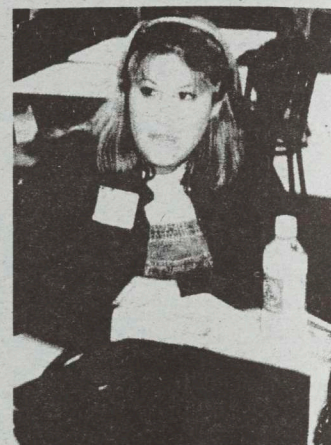
## Orientation 2000



This year's O-Team say "Aloha!" to freshmen and transfer students during Orientation, July 2000.



At the Dome, Allison and Liza take a much-needed break from their day-long Orientation.



Two new faces to CSUSM: freshmen, Allison Farmer and Liza Deyo (above).



Transfer students ask questions during a Parking Services presentation.



O-Team takes "Transfers" on a campus tour.  
Pictures Provided By: Victoria Segall

## Thefts Over Summer

By: Melanie Addington  
PRIDE EDITOR

Over the summer, California State University San Marcos experienced a series of thefts that occurred from May 3 to June 6, in Founder's Plaza, University Hall, Craven Hall, and Science Hall.

According to Chief Thomas Schultheis, "the individual entered an unoccupied office or room and removed the cash from unattended purses and wallets. This individual looked through desks and file cabinet drawers, where most people keep their purses and other valuables."

No further thefts have been reported. Chief Schultheis states that the Campus Police increased foot patrols around the areas and developed a profile on the individual. Schultheis believes the individual stopped once he/she was aware of the profile developed by the campus police.

There have not been many thefts on campus in the past. Schultheis states that this was a "one time series," but as a campus grows, "individuals take advantage of the opportunities."

If you have any questions, please contact Officer Mike O'Deane at 750-4567, or visit the University Police website at [http://www.csusm.edu/public\\_safety](http://www.csusm.edu/public_safety).

### Safety Tips from CSUSM Police Officers:

1. If you are leaving your office or classroom, ALWAYS lock up your valuables or keep them with you.
2. Lock your offices when you are away.
3. Don't have personal items in view. Chief Schultheis warns, "Most people leave things in the first drawer of desk or cabinet and think they are 'hiding' the items. Thieves know hiding places."
4. Be aware of unfamiliar people in your work area. Don't be afraid to challenge someone who is loitering there. Schultheis says, "Don't confront [anyone] physically. Say, 'May I help you?' A thief does not want to be identified. Usually, they will say no and leave."
5. Students should not leave backpacks unattended. Wallets may easily slip out and students may not notice a missing wallet until after it is gone.
6. If you observe a crime take place, call the University Police at 3-1-1.
7. "Most importantly," says Schultheis, "Be aware of your environment."

## Cal State San Marcos Accredited until 2008

By: Victoria B. Segall  
PRIDE EDITOR

"The Western Association of Schools & Colleges (WASC), acted to reaffirm the accreditation of California State University San Marcos," stated President Gonzalez in a memorandum dated July 24, 2000 and addressed to the Cal State San Marcos Campus Community.

WASC, an accreditation agency, visited the campus March 6-9, 2000 to review the progression of CSUSM since 1993. The WASC evaluation team met with the WASC Commission June 22-23, 2000 and decided to grant the University accreditation for the next eight years.

In a letter dated July 10, 2000, the WASC Commission commended the University for its focus on three themes in the CSUSM self-study model: "Approaching Community" (CSUSM as a learning community), "Building Capacity & Envisioning the Future," (concerns on "reshaping the university faculty," as well as

new construction on campus), and "Cultivating an Engaged Public" (includes preparation of students for the "real-world" and their life-long learning).

During the accreditation review, the WASC team and the Commission made recommendations to the University, including the need for the University to work on "decision making and program development." Although the Commission commended CSUSM on making itself known to San Diego County, the Commission believed that the University lacked "clarity about how to proceed with the development of new programs..." In order for CSUSM to develop new programs, the University will have to clarify its "academic vision," according to WASC Executive Director, Ralph Wolff.

Future accreditation reviews for CSUSM will include a "Preparatory Review" in 2007 and "Educational Effectiveness Review" in March 2008.

## Interview With Dean Moustafa

>>Article continued from pg. 1

obtaining accreditation for the College of Business, expanding the MBA program and the Senior Experience (where senior business students have the opportunity to work and solve problems with "real world" businesses and organizations).

In addition, Dr. Moustafa also plans to have a task force comprised of members of the business community and the College of Business to decide how to invest the \$1 million donation from Qualcomm. Dr. Moustafa states, "The \$1 million gift is a turning point in the history of the College of Business. It is our choice to make it our first million or our last million."



Dr. Moustafa  
Photo by: Victoria Segall



# Weekly Web Site

Web sites are designed with different goals in mind. Some websites are intended to promote the sale of a product, some are intended to be entertaining and artistic, and some primarily provide information. As those of a public institution, the CSUSM web pages should be expected to provide current information in a user-friendly manner.

[www.csusm.edu](http://www.csusm.edu)

CSUSM's home page ([www.csusm.edu](http://www.csusm.edu)) provides a number of links and announcements that change regularly, often with useful information, such as "Summer 2000 Schedule of Classes" and "Road Construction Detours for Twin-Oaks Valley Road Freeway Overpass."

[swis.csusm.edu](http://swis.csusm.edu)

The SMART Web System ([swis.csusm.edu](http://swis.csusm.edu)) is a very useful portion of CSUSM's web system. After logging on, students can check the details of their CSUSM record including holds,

payments, grades, and unofficial transcripts. The Smart Web also makes it possible for students to register online and to add and drop classes. The SMART Web also displays the book list for classes as well as a detailed class schedule by day and time.

[wm.csusm.edu](http://wm.csusm.edu)

Web-based email has been added to the services provided on the CSUSM web pages at: [wm.csusm.edu](http://wm.csusm.edu). This link is simply another way to access [\\*@csusm.edu](mailto:*@csusm.edu) email accounts.

The web pages on [www.csusm.edu](http://www.csusm.edu) contain a great deal of information on the policies of the university. If someone has a question about CSUSM, the information is probably on the website. However, finding the information is a different story.

With the way the site is organized, I have never had much luck finding information by following links such as "Info for Students" or "Info for Visitors."

Unless you know exactly what you are looking for and how it fits into the department-naming scheme of the bureaucracy that is CSUSM, specific information can be very difficult to find.

Essentially, on CSUSM's web pages it is easy to find basic information, which is not always very helpful. As a result, I have found the best way to find detailed information is to search using either the site map (<http://www.csusm.edu/cwismap.html>) or to search for keywords (<http://www.csusm.edu/search>) on the csusm.edu pages. Be careful when searching, however, as outdated pages will often be turned up by the search engine--it seems that part of the wealth of information held on the campus web pages is outdated information.

Jafo\_wac

Email [jafo\\_wac@hotmail.com](mailto:jafo_wac@hotmail.com) with comments or suggestions for the next web site review.

## Retraction

The Pride student newspaper printed incorrect information in the "Student Leadership Awards Night" article in its May 16, 2000, issue.

The staff writer listed Penny Lanese as the recipient of the Victorious Club Award. In fact the award recipient was Yolanda Anderson.

Moreover, the staff writer stated that the Victorious Club was a "student organization that works to achieve equal rights and privileges for

the physically challenged."

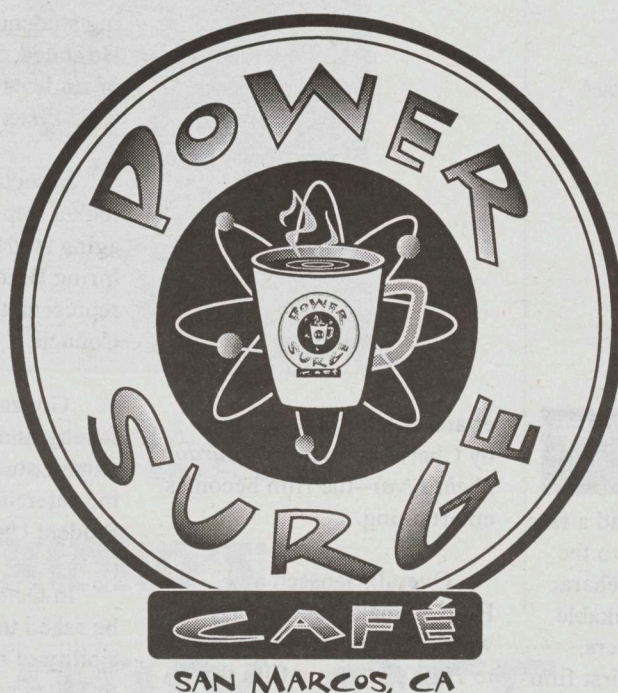
The purpose of the Victorious Club is *not* to achieve equal rights and privileges, *nor* is it only for the physically challenged.

The Pride would like to clarify that the Victorious Club is a student organization for *everyone* who wants to *support* and *celebrate* the *victories* of *disabled* people.

We apologize to Yolanda Anderson and the Victorious Club for these errors.

# NOW THAT YOU'RE BACK ON CAMPUS, DON'T YOU WANT TO GET OFF?

**COFFEE**  
**SMOOTHIES**  
**SALADS**



**SANDWICHES**  
**PASTRIES**  
**& LOTS MORE!**

**RELAXED ATMOSPHERE**

**OPEN 'TIL 11PM 6 NIGHTS A WEEK**

**LIVE MUSIC EVERY THURSDAY, FRIDAY, AND  
SATURDAY NIGHTS**

**POWER SURGE CAFE**

241 S. TWIN OAKS VALLEY RD.  
ALMOST A MINUTE FROM CAL-STATE  
SAN MARCOS (DEPENDING ON TRAFFIC),  
ON THE NORTHEAST CORNER OF TWIN  
OAKS AND BARHAM.

(760) 752-8669  
(760) 752-1965 (FAX)

[WWW.POWERSURGECAFE.COM](http://WWW.POWERSURGECAFE.COM)



# Palomar College

## Still need a class?

Last day to add fall semester classes is Sept. 1

- Most courses transfer
- Multiple start dates after Sept. 1
- Nine convenient North County locations
- \$11 a credit unit/CA resident

**Admissions: (760) 744-1150, ext. 2164**

**Visit us on the web: [www.palomar.edu](http://www.palomar.edu)**



**9 Locations: San Marcos • Camp Pendleton • Fallbrook • Pauma Valley  
Borrego Springs • Escondido • Ramona • Poway • Mt. Carmel**

## Love and Sex

By: Victoria B. Segall  
PRIDE EDITOR

Kate Wells (played by Famke Janssen) is a journalist on the verge of being fired unless she writes an exceptional article for her editor. The topic? "How to Find the Perfect Man: A Woman's Guide to Love & Sex."

This task leads Kate to reflect on her past, failed relationships with ex-boyfriends that include a married music director and a ninja-film actor obsessed with Robert Dinero. Among Kate's many boyfriends is Adam Levy (played by Jon Favreau), an artist with an "abnormally large head," as Kate's character playfully describes him.

There is good chemistry and some funny scenes between the two lead characters--Kate and Adam, played by Famke Janssen (Jean Grey in *X-men*) and Jon Favreau (writer and star of the film, *Swingers*).

However, I was not too impressed by Janssen's downplayed performance and felt she did not bring her character to life.

*Jon Favreau and Famke Janssen in  
LOVE & SEX  
Photo: Cass Bird*

However Favreau did a fine job of bringing energy to the film and portrayed his character, Adam, as a fresh, likable guy with funny one-liners.

*Love & Sex* is the first film written and directed by Valerie Breiman. Breiman wrote the script, *Love & Sex*, in only three weeks, which is evident in the slow, predictable start of the film.

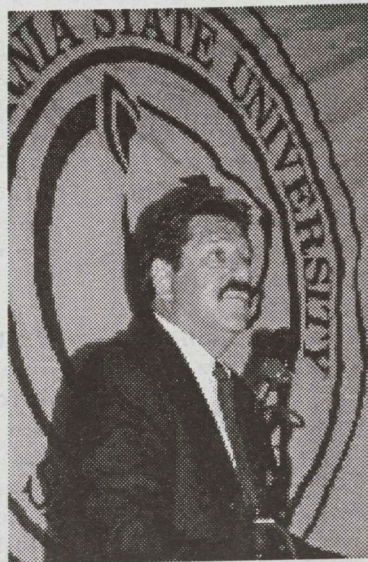
However, as the film progresses and more humorous and energetic characters are introduced--including Kate's cowork-

er and friend, Mary, played by Cheri Oteri (from *Saturday Night Live*)--the film becomes entertaining.

Overall, Janssen and Favreau make this an easy-to-watch romantic comedy, similar to *High Fidelity*, a film that also dealt with relationships but from a male's point of view. Hence, if you saw *High Fidelity* and enjoyed it, you'll probably enjoy *Love and Sex*.

*Love & Sex* plays September 8 and is not yet rated.

## Convocation Continued....



*President Gonzalez addresses the faculty at this year's convocation. Photo courtesy of George Cagala*

Twenty-one faculty members were promoted with tenure to rank of Associate

Professor and eight were promoted to full professor or librarian.

### Construction

Gonzalez stated that, "last year, we did not complete any buildings, but we finished the grading of the land bordered by Craven, Barham, and Campus Way and construction has begun on the science building and arts complex."

CSUSM also met their initial fundraising goal for the new library. Construction is set to begin March 2001.

In October, a financial project created by Student and Administrative Affairs will be taken to the Board of Trustees for approval of apartment-style dorms. If approved, construction could begin during the 2002-2003 school year.

### Referendum

ASI President Dean Manship spoke to the faculty about the need for encouraging students to get involved. He stated, "that fifty percent of students drop out of the CSU system."

Associated Students, Inc. took a step toward encouraging student involvement by hiring Brad Schmidt as the representative for Inter-Club Council.

Gonzalez also urged both faculty and staff members to engage students in the upcoming referendum regarding the Student Union building.

In October, students will be asked to vote on the possibility of raising student fees to \$50 per semester. This \$30 dollar fee increase, if voted in, will go into effect Fall 2001.

Grievance arbitration hearing

The CSUSM faculty union, the California Faculty Association (CFA), has two grievances pending before

arbitrators over the issue of workload.

The hearing was originally set for July 28 but has been postponed until October at the request of the local CFA.

Gonzalez stated in regards to resolving workload issues, "I know this is an issue that had dogged this campus since before my arrival, but I pledge to you that I will do all that I can to resolve it in a way that will cause the least disruption and provide the maximum benefit and flexibility to faculty."

An article in North County Times on August 22, quoted Geraldo Gonzalez as saying, "I think [the president] is saying he wants to be flexible and that he wants to work with the faculty. I hope we can keep it so we can preserve the quality of our programs."

### State funding for summer courses

State funding also was recently approved for summer courses. President Gonzalez stated, "the goal is to gain maximum flexibility from the Chancellor's office in how we assign faculty to summer sessions."

### WASC Accreditation and Campus Climate

Although the WASC review was favorable, there were several recommendations, one relating to campus climate.

While WASC congratulated the University on its "commitment to diversity," WASC urged the University "to attend to the campus climate and to move the campus toward becoming the multicultural community envisioned in the mission statement."

President Gonzalez remarked on the urgent need to settle racial issues on campus but that it must be done in a "climate of mutual trust and respect."

**Faculty review the Strategic Planning Steering Committee objectives.**  
*Photo courtesy of George Cagala*



# The Jewels of La Jolla: “Frida Kahlo, Diego Rivera, and 20th-Century Mexican Art”

By: Victoria B. Segall  
PRIDE EDITOR

"Frida Kahlo, Diego Rivera, and Twentieth Century Mexican Art" will be on exhibit through Monday, September 4, at the San Diego Museum of Contemporary Art in La Jolla.

Well-known paintings on display include Frida Kahlo's *Autorretrato con monos* (Self-portrait with Monkeys) and Diego Rivera's *Vendedora de alcatraces* (Calla Lily Vendor). Additional works by Kahlo include *Autorretrato con collar* (Self-portrait with Necklace) and--unlike her more "normal" paintings on display at the museum--her surreal painting, *El abrazo de amor del universo, la tierra (México) Diego, yo y el señor Xolotl* (The Love Embrace of the Universe, the Earth (México) Diego, I and Señor Xolotl).

This paintings is more characteristic of the eccentric Kahlo who was quoted as saying, "I paint my own reality." The "reality" Kahlo paints shows her suffering after her bus accident at age 18 years which left her bed-ridden for a few months.

In addition to paintings, lithographs entitled *Acuarelas*, by Kahlo's husband--renowned painter and muralist--Diego Rivera, are on display. The lithographs are watercolor sketches that portray Rivera's views of country living in Mexico.



*Autorretrato Con Monos*  
Frida Kahlo  
Provided By: Museum of Cont. Art

Maria Izquierdo, José Clemente Orozco, David Alfaro Siqueiros, and Francisco Toledo are a few of the many Mexican artists with works on exhibit. Miguel Calderón is another artist with prints on display.

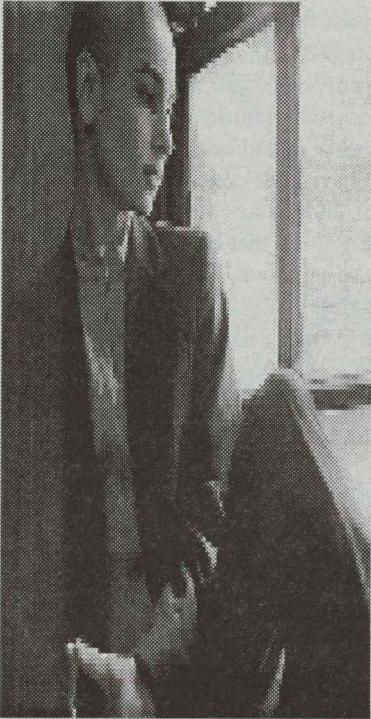
Two of Calderón's more unique prints are entitled *C-Print bienvenidos a mis huevos peludos #2 and #4*.

>> continued on pg 5

# Sinead O'Connor's Latest Album Has Faith and Courage

By: Melanie Addington  
PRIDE EDITOR

Sinead O'Connor's sixth album, *Faith and Courage*, continues her tradition of wistful ballads with two new, beautiful songs, "Jealous" and "The State I'm In." Like her 1990 hit, "Nothing Compares to U," the songs reflect on lost love and the pain of healing after a breakup.



Sinead O'Connor

"Dancing Lessons" is the only song on the album mixed and produced by Wyclef Jean, formally a member of the now defunct Fugees, who is set to release his second independent album this week. Although the sound of "Dancing Lessons" is a bit bubblegum, the beat is catchy and the lyrics inspire romantic daydreams. However, the remaining songs on the album reflect a mature, strong, and independent woman who seems to have finally found an inner peace.

In the song, "The Lamb's Book of Life," Sinead atones for her angrier days. She sings, "I know that I have done many things to give you reason not to listen to me/but if you knew me maybe you would understand me/words can't express how sorry I am." On the edge of preaching she continues, "If people just believed enough in God to pray/the world thinks that sounds crazy/and that's the thing that makes me sing so sadly/to think that we would leave God so lonely/to think that we would mess up our own destiny."

As a dedicated priest of the Catholic religion, Sinead's theme of faith and praise to the Father is a far cry from the outrageous young woman who tore the Pope's picture on *Saturday Night Live* in 1992.

Sinead's second track, "No Man's Woman," has been gaining popularity by its continuous radio play on pop stations. In this song, she fuses her faith in spirituality and confidence of a strong, independent woman into one well-mixed song with a catchy beat.

The album starts strong, but, by the end, the slow rhythm of songs, such as, "If U Ever" and "Emma's Song," strain even the most attentive ear. Overall, the album is a strong addition for dedicated fans. But, if you are just beginning to appreciate Sinead's music, I recommend buying her first two albums, the *Lion and the Cobra* and *I Do Not Want What I Haven't Got*, beforehand, to fully appreciate the maturity she presents in *Faith and Courage*.



For the Kinko's location nearest you, call 1-800-2-KINKOS  
Open 24 hours • AOL® Keyword: kinkos.com

kinko's®

20% OFF  
PRODUCTS AND SERVICES

A 20% discount is applicable on all regularly priced Kinko's products and services except postage, shipping, gift certificate purchase and videoconferencing. This discount cannot be used in combination with volume pricing, custom-bid orders, sale items and special offers or other discounts. Offer is limited to one coupon per customer. Customer must relinquish coupon at time of purchase. Coupon may not be reproduced and is not valid with other coupons, offers or discounts. Offer valid at time of purchase only and may not be discounted or credited to past or future purchases. Products and services vary by location. Coupon void where prohibited or restricted by law. No cash value.

VALID AT KINKO'S PARTICIPATING U.S. KINKO'S LOCATIONS ONLY.  
1-800-2-KINKOS • AOL® Keyword: kinkos.com

AAD598

kinko's®

EXP 12/31/00

AOL is a registered servicemark of America Online, Inc. ©2000 America Online, Inc. All rights reserved. Products and services vary by location. Kinko's is a registered trademark of Kinko's Ventures, Inc. and is used by permission. Kinko's requires written permission from the copyright holder in order to reproduce any copyrighted work. ©2000 Kinko's, Inc. All rights reserved.

- PRINT FROM DISK
- DIGITAL PRINTING
- COMPUTER WORKSTATIONS
- ELECTRONIC FILE SUBMISSION
- HIGH-SPEED INTERNET ACCESS
- POSTERS
- BANNERS & SIGNS
- MOUNTING & LAMINATING
- BINDING
- REPORTS
- PRESENTATIONS
- HIGH-VOLUME COPIES
- FLYERS & BROCHURES
- SHIPPING SERVICES
- PICKUP & DELIVERY
- FULL - & SELF-SERVE



## Message from ASI President Dean Manship

As your ASI President, I would like to welcome all of you back for another year at California State University San Marcos. Your ASI Board of Directors and staff have been working hard all summer to provide more programs and increase our services to the students.

We have dedicated a full time ASI employee, Brad Schmidt, to aid and assist student organization in all aspects of club activities and student life. ASI has hired Joyce Williams, the new Program Director for the Early Learning Center, and we are currently doing a feasibility study for bringing the center onto campus in the next few years.

ASI also offers Intramural Sports, which include basketball, soccer, flag football, softball, bowling, and volleyball, as well as fitness classes such as aerobics, nutrition, group walking, yoga, and various dance classes.

We would like all students to know that we are "An Organization OF the students, BY the Students and FOR the Students." As shareholders of ASI, if you have any suggestions on how we can improve our services to the students, please don't hesitate to let us know.

To accommodate the students needs, our office will be open Monday through Thursday, 8am to 6pm, and Fridays, 8am to 5pm, so we invite you to come in and meet with your representatives to share your concerns. Once again, welcome back and have a great semester!

Dean Manship  
President & CEO  
Associated Students, Inc.  
California State University,  
San Marcos  
(760) 750-4990 Fax (760)  
750-3149

## The Truth About Stress and the College Student

By Sarah Aberle, MPH, RN

Getting back into the fall semester brings excitement, anxiety, and stress for all students. From freshmen to graduate students, stress is experienced through pressures of writing papers, taking tests, keeping up on reading assignments, and perhaps working fulltime while raising children.

Many people do not realize that stress is a normal part of life. Stress can be helpful to get things done; however, too much stress can be harmful. Our bodies react to stress in a "fight or flight reaction." When our sympathetic nervous system is working overtime and we are frequently experiencing the "fight or flight" reaction, we also experience psychological and/or physical problems.

### *Symptoms we experience with increased stress or anxiety:*

*Tension headaches, inability to  
concentrate, insomnia;  
Gastrointestinal symptoms,  
diarrhea, nausea;  
Increased or decreased appe-  
tite;  
Tightness in the chest, back-  
aches, neck pain;  
Increased feelings of anxiety;  
and  
Mood swings and irritability*

### *What can be done to combat stress?*

#### 1) Learn to say, "No!"

Try to decrease your workload if possible. Learn to say **NO!** Learn to set limits for yourself. Try to take one day at a time and acknowledge your accomplishments as tasks are completed. Put things into perspective and evaluate: "How will this decision effect the BIG picture in my life." Don't spend time worrying about circumstances that you cannot change.

#### 2) Exercise:

Remember to get daily exercise. Exercising helps to

increase **endorphins** (a chemical in the brain, that helps us to relax and to feel good). Try walking, running, taking a dance class, roller-blading, going to the gym, or swimming. Exercise makes you feel good and look good! Simply taking a walk in the **sunshine** can help improve your mood.

#### 3) Relax:

Learn to relax throughout the day by stretching and taking slow deep breaths. Learn to meditate and set aside some quiet time to organize your thoughts. Watch out for **negative** thoughts that can overpower you throughout the day. Surround yourself with positive and nurturing friends. Share your concerns with your friends; many times simply knowing that other people feel the same way helps to alleviate stress.

Leave some time in your schedule for fun, enjoyable activities. Remember it should be fun or relaxing!

Take a hot bath with candles around the bathtub, watch the sunset at the beach, take a hike in the woods, or listen to your favorite music.

#### 4) Remember to sleep and eat:

Try to get adequate sleep and eat three well-balanced meals per day with plenty of fruit and vegetables. Good nutrition fuels the body, which keeps us going while it boosts our immune system in order to fight off infections. Watch out for too much caffeine and alcohol; if you consume too much, they can affect your ability to sleep and to concentrate.

Learn to recognize the signals that your body gives off when you are experiencing too much stress. Make adjustments and learn to say **NO!** It's okay not to be Super Man or Super Woman. Give yourself a break! Learn to accept the things you cannot change.

If you are a new college student, you may need additional help with time management, study skills, guidance in writing papers, note taking, etc. For more information on the above topics check out:

[Http://www.ucc.vt.edu/  
stdysk/htimesch.html](http://www.ucc.vt.edu/stdysk/htimesch.html).

If you continue to experience stress that interferes with your daily life, contact Counseling and Psychological Services at 760-750-4910 or Student Health Services at 760-750-4915.

*Why is it that we can't  
seem to get it right when  
it comes to recycling on  
this campus?*

There is an ample number of recycling containers on this campus: more than 200 free-standing containers throughout campus, several individual containers, and three gray containers located in the Dome for aluminum, plastic, and glass recycling products.

There are more containers for recycling on this campus than any other college campus or institution that I have set foot upon, and, yet, we can't seem to get it right.

AB75 is a recently passed and enacted California legislative bill that dictates that all California universities must change, implement, and improve their recycling programs within the next few years.

According to AB75, all state universities must be at twenty-five percent recycling efficiency by 2002 and at fifty percent recycling efficiency by the year 2004. This means that if CSUSM does not reach this level by the year 2004, it could be penalized and fined, thus losing valuable money and prestige in the eyes of other CSU campuses.

We currently stand at about thirty percent recycling efficiency--very good in comparison to other campuses and their recycling programs--but the thirty percent recycling efficiency falls short of the fifty percent efficiency that must be met by 2004.

CSUSM's recycling coordinator, Carl Hanson, says, "With the amount of resources we have at our disposal and the accessibility of those resources, there is no reason why we shouldn't be at fifty percent or better this very year."

So why aren't we better at recycling? Is it because we are confused about recycling,

or that we don't have the time to do so?

I don't believe so. I believe it's simply because students and faculty don't prioritize recycling. Nancy Hoskins, Assistant Director of Administration and Customer Service, states, "Individuals should be more responsible for their individual actions."

The problem is that we, as a whole--students and faculty--can't seem to get the simple concept that plastic and aluminum can't be mixed with glass, glass shouldn't be mixed with paper, and that trash should be thrown in the trash can and not mixed with any recycling product. Even worse, some of us don't participate in its practices at all.

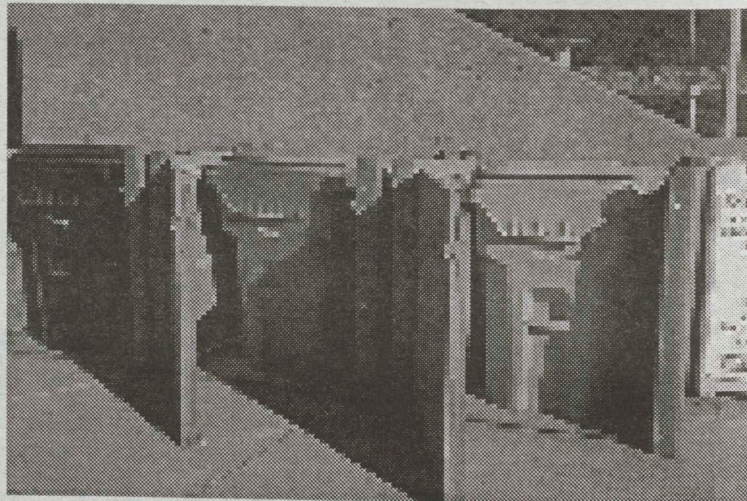
On a number of occasions I have observed faculty and students throwing trash into recycling bins and recycling products thrown into trashcans. It always appears that the culprits just don't seem to care about what they are doing.

It's not like our system here at CSU San Marcos is that difficult, any grade school child could figure it out: Red containers of any size or shape are for glass products to be placed into, gray containers of any size are for plastic or aluminum, and black containers are for paper products--not including cardboard or poster board.

So I guess I'm here to remind everyone that it does matter how efficiently we do recycle, not only for the ecologically hazardous effects of not recycling properly, but for the monetary and political effects on the campus community.

If we were recycling properly, there would be no reason why all other universities couldn't look upon us as the ideal model by which to aspire.

Adam Bailey



## HAVE AN OPINION? SUBMIT A LETTER TO THE EDITORS

Letters should be submitted via e-mail to [pride@csusm.edu](mailto:pride@csusm.edu), rather than to the individual editors.

Deadline for submissions is noon the Thursday prior to publication. Letters to the editors should include an address, telephone number, e-mail and identification. Letters may be edited for grammar and length. It is the Pride policy not to accept anonymous letters. Editors reserve the right not to publish any and all letters.

## The Pride

Co-Editor Melanie Addington  
Co-Editor Victoria B. Segall  
Graduate Intern Jayne Braman  
Faculty Advisor Madeleine F. Marshall

All opinions and letters to the editor, published in *The Pride*, represent the opinions of the author, and do not necessarily represent the views of *The Pride*, or of California State University San Marcos. Unsigned editorials represent the majority opinion of *The Pride* editorial board.

Letters to the editors should include an address, telephone number, e-mail and identification. Letters may be edited for grammar and length. Letters should be submitted via electronic mail to *The Pride* electronic mail account, rather than the individual editors. It is the policy of *The Pride* not to print anonymous letters.

Display and classified advertising in *The Pride* should not be construed as the endorsement or investigation of commercial enterprises or ventures. *The Pride* reserves the right to reject any advertising. *The Pride* is published weekly on Tuesdays during the academic year.

## The Pride

California State University San Marcos  
San Marcos, CA  
92096-0001  
Phone: (760) 750-6111  
Fax: (760) 750-4030  
E-mail: [pride@csusm.edu](mailto:pride@csusm.edu)  
<http://www.csusm.edu/pride>

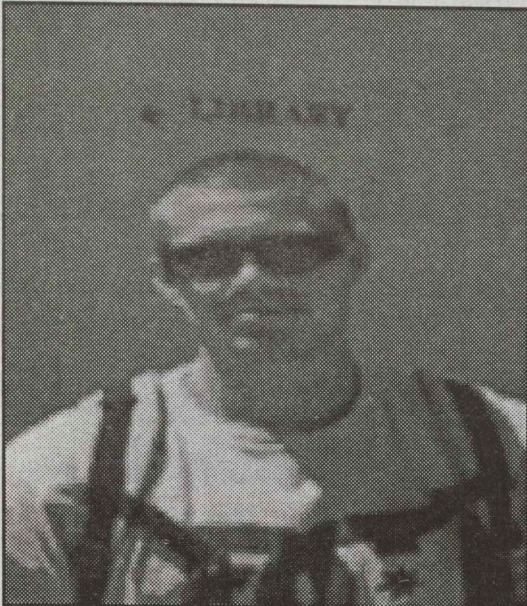


What is your biggest concern about transferring to CSUSM?

# The Campus Beat

By: Melanie Addington  
PRIDE EDITOR

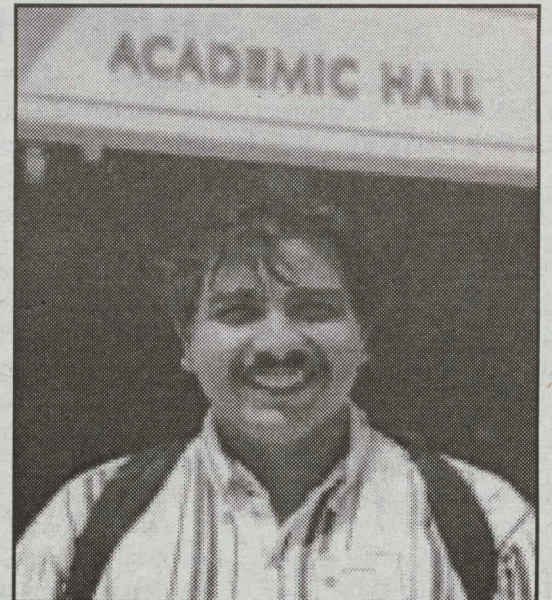
Photos by Victoria Segall  
PRIDE EDITOR



"I don't have any concerns."  
(John Dellos)



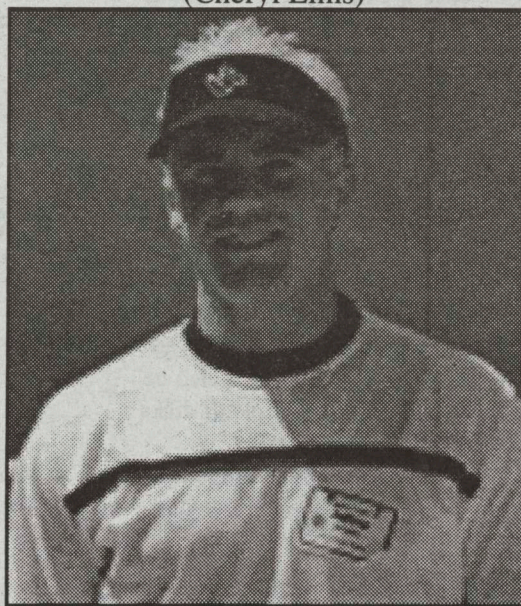
"How long it's going to take me to get my classes done and the commute."  
(Cheryl Elms)



"Managing my time and learning how to quit procrastinating."  
(James Tellez)



"The academic load per class--the amount of work required."  
(Debra Skinner)



"The only concern is if campus life is going to be exciting."  
(Jeffrey Jokerst)



"Parking. It's always parking."  
(Sylvi McIntyre)

>> Continued from pg. 1

While most of the works on display are translated from English to Spanish, these particular prints are not translated for museum goers, possibly due to the translation of the piece which hints at male anatomical parts slightly disguised by a summer beach scene. Depending on your sense of humor, these unusual prints will either make you cringe or laugh. Calderón's prints are just some of the many surprising and unique pieces of work in this exhibit from the Jacques and Natasha Gelman Collection.

In my opinion, this art exhibit is definitely worth checking out and art-lovers will not be disappointed by Kahlo's self-portraits and Rivera's *Calla Lily Vendor*. These works of art may be considered rare jewels of La Jolla since they will only be on display through September 4. The Museum of Contemporary Art is located at 400 Prospect Street in La Jolla. For more information call (858) 454-3541 or visit the museum web site at: [www.mcasandiego.org](http://www.mcasandiego.org).

## Vehicle Catches Fire; No One Is Injured

By: Giovanni Ferrer  
Pride Staff Writer

During the Festival, a Ford Bronco's engine began smoking as it pulled into Parking Lot "C." University Police called the San Marcos Police and Fire Department. Flames then began rising from the engine.

According to Officer John Grosso, it took the Fire Department about five minutes to arrive on the scene and then they immediately put out the flames. "The fuel line must have broke and gasoline might have splashed onto the engine causing the incineration," said Manuel Herrera, owner of the vehicle.

Officer Grosso states that there were five people inside the vehicle, including Herrera. No injuries were reported. Afterwards Herrera had the vehicle towed. Herrera and his family lost important documents and money, but says he was thankful that no one was hurt.



Policemen watch as fireman puts out the last of the fire.  
Photo by: Chris Weedon

## Guelagueta Festival: Tradition of dance, song, music and cuisine

>> Continued from pg. 1  
Similar events are also held in Los Angeles and Fresno.

Bonnie Bade, Professor of Anthropology at CSUSM and researcher of migrant farm workers, claims that there are over 20,000 Oaxacan people living in San Diego County. She stresses the importance of hosting the event on campus because it attracts the sector of our community that is under-represented at CSUSM.

Professor Bade reports that she would "like to establish CSUSM as a place where the

Oaxacan community feels welcome." She is trying to integrate the Guelagueta Festival into the culture and curriculum here at CSUSM by offering extra credit to students that attend and report on the event. In addition, three CSUSM students videotaped the event to use as a documentary production.

Professor Bonnie Bade says, "it's an honor to have [Guelagueta coordinators] choose CSUSM as the site for this important cultural event." The proceeds from the event will support projects in the local Oaxacan communities.



Traditional Dance



Performances at the festival



Crowd enjoys festivities. Pictures provided by: Chris Weedon



# Academic Bulletin

## The Pride Literary Supplement

The Pride Literary Supplement  
CALL FOR PAPERS

The Pride Literary Supplement (PLS), a publication of The Pride, is again seeking student writing representing inquiry and research across all academic disciplines pursued at CSUSM.

Since its inception, California State University at San Marcos has committed itself to the cultivation of student writing. Across the disciplines, at every academic level, students are required to write and professors are asked to take writing seriously. The student newspaper would like to publish expository, critical, and theoretical writing as much as creative writing, poems, stories or film scripts. The PLS will consider manuscripts of up to 3000 words that both exemplify excellent inquiry and research in their discipline(s) and that able readers from outside that discipline to read with pleasure and understanding. Appropriate faculty judges the quality of research or creative writing. Accessibility is determined by

the editor(s) of The Pride or their designated representatives.

**Submissions:**  
  
Submissions are currently being accepted for the upcoming Pride Literary Supplement. All forms of literary writing -- expository, critical, theoretical and creative writing -- are encouraged.

Authors should avoid highly technical language, critical jargon, foreign, or mathematical language. When technical terms are essential, they should be explained to the reader. References to critical literature, where necessary, should be parenthetical. APA, MLA, Chicago, and all other formats are welcome as long as the paper represents the appropriate academic discipline.

The PLS favors student writing and will privilege student manuscripts that are submitted with the recommendation of a faculty member who has pursued research in the student's field of study or published texts of a related kind.

Staff and faculty contributions will also be considered.

Photos or images (black and white preferred) of other artwork will also be accepted as an enhancement or as an alternative to manuscripts. Please submit images and text using the following instructions.

**For judging and layout purposes:**  
  
Submit a blind copy, with your name appearing only on a cover sheet and essay title, your mailing address, e-mail, phone number, and major or graduate field of study to:  
The Pride mailbox  
"Student and Residential Life" Office:  
Commons 207

Also: E-mail one electronic file attachment (MS Word) to pride@csusm.edu. Entries submitted without an electronic copy will not be reviewed. An electronic copy on a PC-formatted disk will also be accepted. Manuscripts or disks will not be returned.  
**Deadline for submissions:**

November 20, 2000.  
For further information, contact The Pride office by e-mail at pride@csusm.edu, or by phone at (760) 750-6111.

## New Vocal Ensemble at CSUSM

Professor Merryl Goldberg is happy to announce that the University is forming its' very first vocal ensemble. This group is open to all singing ability levels, and promises to be great fun! The group meets as a 2- unit class, MUSC 394, CRN 42166, from 9:00-10:50 on Thursday mornings in VPANX PERFORMING CENTER.

The group will explore a variety of types of music, and will include music for children that can be used with small groups or in classrooms.

We welcome you to come share in some creative and fun times with the group. For more information, please contact Merryl Goldberg at goldberg@csum.edu or (760) 750-4322, or come to class next Thursday and we will be happy to answer all your questions.

## STUDENT Fee Referendum VOTE

### University Student Union Fee Increase Referendum

October 9-10, 2000

Measure 1 – Asks students to approve an increase in the University Student Union Fee for all regularly matriculated students to \$50 per semester/term (a \$30 per semester/term increase for full-time students and a \$40 per semester/term increase for part-time students) effective July 1, 2001. Funds would be used to build and operate the Clarke Field House/University Student Union, which if approved, will be built and open in 2003.

Measure 2 – Asks students to approve two future fee increases of \$15 per semester/term, the first to take effect July 1, 2006 the second \$15 increase to go into effect July 1, 2010. These funds will be used to develop the necessary reserves to build a separate University Student Union facility on or about academic year 2019.

All matriculated students at CSUSM will have the opportunity to vote on the two proposed University Student Union Fee increases on the dates indicated above. Detailed information will be available by early September and can be obtained in the following offices:

Associated Students, Inc., Commons 203  
Cashier's Office & Student Financial Services, Craven 3107  
Financial Aid & Scholarship Office, Craven 4204  
Student & Residential Life, Craven 4116  
Library, Craven 3300  
Enrollment Services Information Center, Craven 5110

For further information please contact: Office of the Vice President for Student Affairs, Craven 5306, (760) 750-4056.

## Welcome Week Schedule

**August 28-Sep.8**  
ASI Information  
Gifts to CSUSM Students  
ASI Recreation & Programs Information  
11:00am-3:00pm  
Founders Plaza

**Tuesday, August 29**  
Info Booth  
7:30am-6:00pm  
Outside Commons 206

One-Stop-Shop  
7:30am-6:00pm  
Commons 206

Welcome by ASI  
Snacks hours:  
8:00am-10:00am  
4:00pm-6:00pm  
Founders Plaza

ASI Information, gifts to CSUSM students, also learn about ASI Recreation & Programs Information  
11:00am-3:00pm  
Founders Plaza

**Wednesday, August 30**  
Info Booth  
7:30am-6:00pm  
Outside Commons 206

President's Picnic  
Come have a free lunch

served by President Gonzalez, the staff, and faculty of CSUSM!  
11:00am-1:00pm  
The Dome Terrace

ASI Information, gifts to CSUSM students, also learn about ASI Recreation & Programs Information  
11:00am-3:00pm  
Founders Plaza

**Thursday, August 31**  
Office Decoration Contest  
See the staff spirit come alive through their office decorations!  
All Day

ASI Information, gifts to CSUSM students, also learn about ASI Recreation & Programs Information  
11:00am-3:00pm  
Founders Plaza

**Monday, September 4**  
University Closed, Labor Day

**Tuesday, September 5**  
Club Week  
Gather information from all clubs on campus! Get Involved!  
9:00am-4:00pm  
Founders Plaza

ASI Information, gifts to CSUSM students, also learn about ASI Recreation & Programs Information  
11:00am-3:00pm  
Founders Plaza

**Wednesday, September 6**  
Club Week  
9:00am-4:00 pm  
Founders Plaza

Alumni Club Reunion Night  
Meet past and present members of the student clubs at CSUSM.  
5:00pm-8:00pm  
The Dome Terrace

ASI Information, gifts to CSUSM students, also learn about ASI Recreation & Programs Information  
11:00am-3:00pm  
Founders Plaza

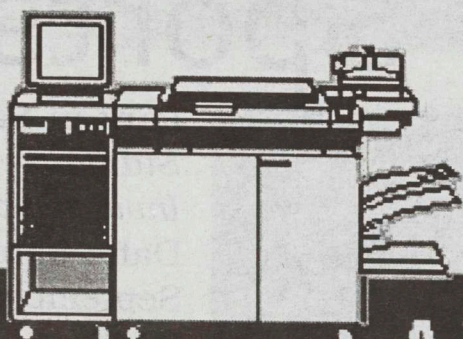
**Thursday, September 7**  
Club Week  
9:00am-4:00pm  
Founders Plaza

ASI Information, gifts to CSUSM students, also learn about ASI Recreation & Programs Information  
11:00am-3:00pm  
Founders Plaza

**Friday, September 8**  
Club Week  
9:00am-4:00pm  
Founders Plaza

ASI Information, gifts to CSUSM students, also learn about ASI Recreation & Programs Information  
11:00am-3:00pm  
Founders Plaza



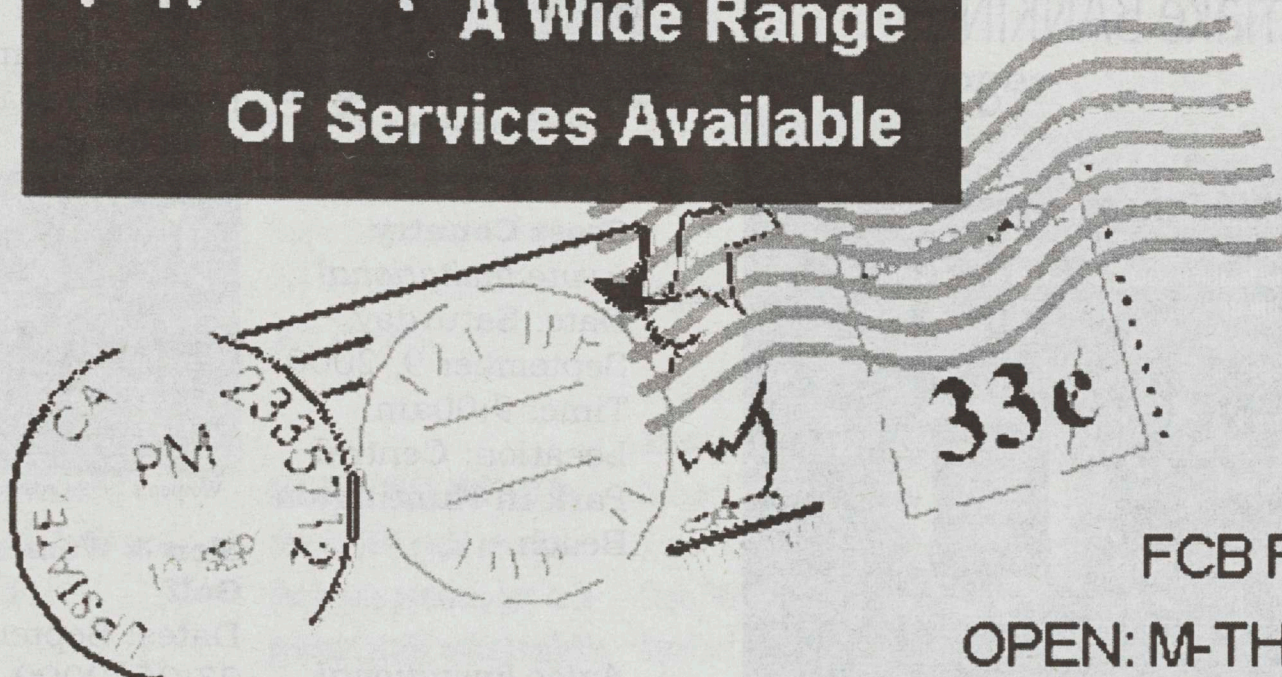


# MaCC

Mail & Copy Center

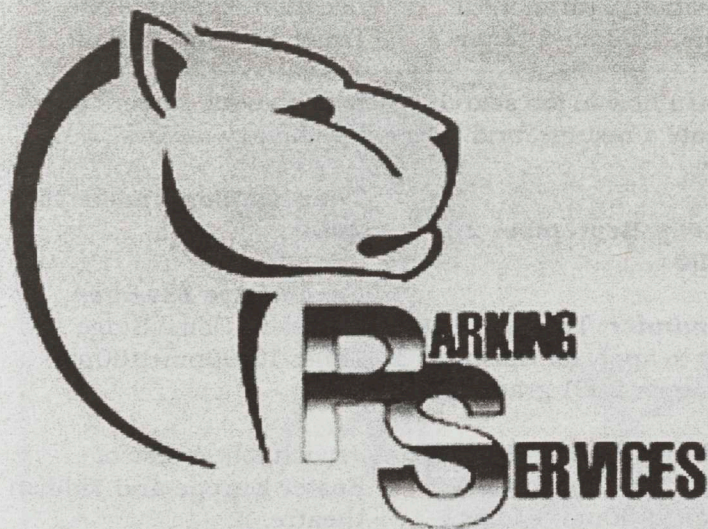
**A Wide Range  
Of Services Available**

Quick Copies  
Color Copies  
Transparencies  
Binding  
Fax Service  
& much more



FCB ROOM 6-106

OPEN: M-TH 8-6 & FRI 8-5



## Parking Services Announces

**Stacked Parking  
Parking Structure Plans  
Fall Permits  
Shuttle Service**

**Don't forget to buy your Fall Permits  
Parking enforcement is from 7:00 A.M.  
to 7:00 P.M. Monday thru Friday.  
Try our Stack Parking the  
first week of school  
in lot C. Drive Safe.**

**Visit Us At: [www.csusm.edu/parking](http://www.csusm.edu/parking) or Call (760) 750-7500**





# Fall 2000 Sports

WELLS  
FARGO

SKIP<sup>the</sup>  
LECTURE  
We make BANKING  
easy

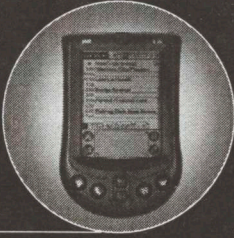
Here's a subject you can ace. Banking at Wells Fargo is a walk in the quad with the *Student Combo Package*. It combines a range of services into one smart plan. Sign up today at the Wells Fargo location nearest your school and you'll rock with a free Sony Music Gift Certificate.

The *Student Combo Package*

- Student ATM Checking
- Free Student MasterCard
- ATM & Check Card
- Online Account Access and much more

Plus log onto [wellsfargo.com/special/sweepstakes](http://wellsfargo.com/special/sweepstakes) and enter the Wells Fargo *Student Combo Sweepstakes* for a chance to win a Palm m100 handheld computer.

No annual fee when linked as overdraft protection to your Wells Fargo checking account. Credit card issued by Wells Fargo Bank Nevada, N.A. and is subject to qualification. © 2000 Wells Fargo Banks. Members FDIC. All Rights Reserved. Palm is a trademark of Palm, Inc., or its subsidiaries.



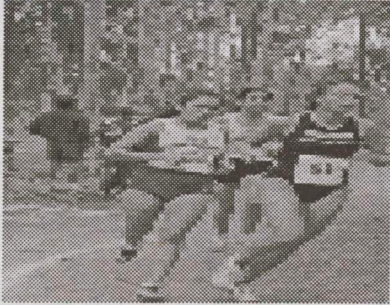


Steve Scott and team in 1999.  
Pcitures provided by: [www.csusm.edu/athletics](http://www.csusm.edu/athletics)

**Cross Country**  
*Irvine Invitational*  
Date: Saturday,  
September 9, 2000  
Time: 9:00am  
Location: Central  
Park in Huntington  
Beach

*Aztec Invitational*  
Date: Saturday,  
September 16,  
2000  
Time: 9:00am  
Location: Balboa

Park in San Diego  
*Stanford*  
*Invitational*  
Date: Saturday,  
September 30,  
2000  
Time: 3:45pm  
Location: Stanford  
in Palo Alto



Women's 1999 Cross Country Team

**Men & Women's  
Golf**  
Dates: September  
23-26, 2000  
Location:  
University of Mary  
Hardin Baylor in  
Belton, Texas

## CALENDAR

<p><b>Thursday, August 31, 2000</b></p> <p><b>Careers in Accounting</b> Location: Commons 206 Time: 4:00pm-6:00pm</p> <p>Come to this workshop if you are interested in the Accounting field.</p> <p><b>Friday, September 1, 2000</b></p> <p><b>James Luna Lecture</b> Location: ACD 102 Time: 7:00pm-8:00pm</p> <p>A performative/lecture survey of performance and installation work.</p> <p><b>Monday, September 4, 2000</b></p> <p><b>LABOR DAY: CAMPUS CLOSED</b></p> <p><b>Wednesday, September 6, 2000</b></p> <p><b>James Luna: Artist's Reception</b> Location: Library Court-yard Time: 3:00pm-5:00pm</p> <p>Artist James Luna's reception for his exhibit. The exhibit runs through November 30.</p>	<p><b>Friday, September 8, 2000</b></p> <p><b>Registration Reminder:</b> September 8 is the last day to: -add/drop classes -withdraw from the University and receive a refund of fees -pay all outstanding registration fees (due to schedule adjustment, to avoid disenrollment) -change from full-time to part-time status and be eligible for a refund</p> <p><b>Career Skills</b> Location: Craven 4201 Time: 9:00am-10:00am</p> <p>Learn how to job search, create a resume, and interview.</p> <p><b>September 11th - September 14th</b></p> <p><b>ASI Business Expo 2000</b> Location: Founders Plaza Time: 8:00am-3:00pm</p> <p><b>September 13th</b></p> <p><b>Student Professional Development Day</b> Location: Founders Plaza Time: 10:00am-3:00pm</p> <p><b>Thursday, September 14, 2000</b></p>	<p><b>How to Budget Your Money</b> Location: Commons 206 Time: 12:00pm-1:00pm</p> <p>A money budgeting workshop.</p> <p><b>Tuesday, September 19, 2000</b></p> <p><b>Grammar and Punctuation</b> Location: Commons 206 Time: 12:00pm-1:00pm</p> <p>A workshop for those who needing helps with grammar and punctuation?!*</p> <p><b>Planning Your Academic Success</b> Location: Commons 206 Time: 1:00pm-2:00pm</p> <p>Need help planning your academic life? Come to this workshop.</p> <p><b>Wednesday, September 20, 2000</b></p> <p><b>Alumni/Student Networking Night</b> Location: The Pizza Port in Carlsbad</p> <p><b>Health &amp; Wellness Resource Fair: "Campus &amp; Community"</b> Open To Everyone Location: Palm Court Time: 10:00am-2:00pm</p>	<p><b>Career Skills</b> Location: Craven 4201 Time: 1:00pm-5:00pm</p> <p>Learn how to job search, create a resume, and interview.</p> <p><b>Friday, September 22, 2000</b></p> <p><b>Reminder:</b> This is the last day to apply for Spring and Summer 2001 graduation</p> <p><b>Intro to Career Services</b> Location: Craven 4201 Time: 3:00pm-4:00pm</p> <p>A workshop on getting started in career services.</p> <p><b>Monday, September 25, 2000</b></p> <p><b>Charles McPherson Concert</b> Location: Dome Stage Time: 12:00pm-1:00pm</p> <p>World-acclaimed alto-saxophonist, Charles McPherson and his quartet perform jazz.</p> <p><b>Organizing an Academic Essay</b> Location: Craven 4201 Time: 12:00pm-1:00pm</p> <p>Learn how to organize an academic essay.</p>	<p><b>Careers for Psychology Majors</b> Location: Craven 4201 Time: 1:00pm-2:00pm</p> <p>Learn about careers for psychology majors.</p> <p><b>Tuesday, September 26, 2000</b></p> <p><b>Second Ave Klezmer</b> Location: Dome Stage Time: 12:00pm-1:00pm</p> <p>Jewish folk music of Easter Europe and Yiddish theatre.</p> <p><b>Wednesday, September 27, 2000</b></p> <p><b>Earl Thomas &amp; the Blues Ambassadors</b> Location: Dome Stage Time: 12:00pm-1:00pm</p> <p>Former San Diego "Artist of the Year" sings the blues.</p> <p><b>Intro to Career Services</b> Location: Craven 4201 Time: 5:00pm-6:00pm</p> <p>Receive an introduction into career services.</p> <p><b>Thursday, September 28, 2000</b></p> <p><b>The Blazers</b> Location: Dome Stage Time: 12:00pm-1:00pm</p>
---	---	---	--	--



# Classifieds

## Services Offered

### MEL-TYPE & U study!

Melissa 760.741.4105  
ixoye@home.com

## Help Wanted

Nanny/Part-time  
Monday-Friday, Every other  
Tuesday/Thursday off 6 month  
old girl, \$130/week  
Must provide references, English  
speaking, Carlsbad  
Contact Gavin or Karen at  
760-720-1215

### Attention Work Study Students!

CSUSM's student newspaper is  
currently looking to hire work-

study students this fall! For  
more info, contact The Pride  
at (760) 750-6111, or e-mail  
[pride@csusm.edu](mailto:pride@csusm.edu).

Sales representatives needed in  
North County for fast-paced  
cellular and paging company.  
Please fax resume to: (619)  
284-0244 or contact Jerry at  
(619) 284-9400.

**ACCOMPANIST NEEDED for  
new CSUSM vocal ensemble.**  
**Not a paid position, but inde-  
pendent study units available.**  
**Thursday from 9 to 10:50 am.**  
**Contact Merryl Goldberg at**  
**[Goldberg@csusm.edu](mailto:Goldberg@csusm.edu) or (760)**  
**750-4322 as soon as possible.**

## Counselors Wanted

Childcare Counselors needed for  
Vista area male youth resi-  
dential treatment center. Full-  
time, Part-time, on-call posi-  
tions available. \$7.35-9.00 per  
hour. Fax resume to New Haven  
(760) 630-0798.

## For Sale

1995 Mustang GT Convertible,  
Emerald w/tan top, Leather  
Interior, 5.0 Liter V8, Auto  
Trans, Power  
Seats/Windows/Door Locks,  
Excellent Condition.  
760-471-9588

## Miscellaneous

Egg Donors Needed to help  
make an infertile couples  
dreams come true.  
Compensation is \$3,500.00.  
Ages 20 to 30. Please contact  
Susan at  
1-800-463-5656.

**Consider Your Pride!**  
**Enroll in:**  
**LTWR 316: 41275**  
**or COMM316:**  
**41903**  
**on Tuesdays**  
**Be a Pride staff**  
**writer!**

## Thoughts on....

### Education

If written directions alone  
would suffice, libraries wouldn't  
need to have the rest of the uni-  
versities attached.

-Judith Martin, "Miss  
Manners" columnist and author

Seeing much, suffering much,  
and studying much, are the three  
pillars of learning.

-Benjamin Disraeli

It is important that students  
bring a certain ragamuffin, bare-  
foot, irreverence to their studies;  
they are not here to worship what  
is known, but to question it.

-J. Bronowski, *The Ascent of  
Man*

A love affair with knowledge  
will never end in heartbreak.

-Michael Garrett Marino

A fool's brain digests phi-  
losophy into folly, science into  
superstition, and art into pedant-  
ry. Hence, University education.

-George Bernard Shaw

Learning is a treasure that  
will follow its owner every-  
where.

-Chinese Proverb


By: Melanie Addington  
PRIDE EDITOR

there's  
a **better**  
textbook  
experience

**Play the  
Break Away  
Sweepstakes!**

Sponsored by American Express®  
Snag your choice of a killer  
vacation with a friend  
to Europe, Cancun or  
Park City, Utah.

**Discounted Books • Fast Delivery • 100% Secure Site**

 **VarsityBooks.com**

No Purchase Necessary. The Varsity Books "Break  
Away" Sweepstakes begins on August 10, 2000  
and ends on October 3, 2000. To enter by mail  
send your name, address, City, State and Zip to:  
The Varsity Books "Break Away" Sweepstakes,  
PO Box 612, Wynnewood, PA 19096-0612.  
Sweepstakes entries must be postmarked by  
October 3, 2000 and received by October 10,  
2000. One entry per envelope. For a complete set  
of rules, send a self-addressed stamped envelope  
to RealTIME Media, PO Box 603, Wynnewood,  
PA 19096-0603. Vermont residents need not  
include postage. Void where prohibited.



# class isn't the only thing you'll be tempted to cut.



Save an extra 10% on anything in our store. Even sale and clearance items. Plus, if you apply for a Mervyn's California® card and are approved, you'll receive a new account discount good for 15% off a future purchase. Now that's a cut even your teachers would approve of.



The Mervyn's California® card.  
Shop with the card that saves you more.

The Mervyn's California® card is issued by Retailers National Bank, an affiliate of Mervyn's California®. Subject to credit approval. You must be of legal age to apply.

**mervyn's**  
*California*®

For the store nearest you, call 1-800-M-E-R-V-Y-N-S or visit [mervyns.com](http://mervyns.com).